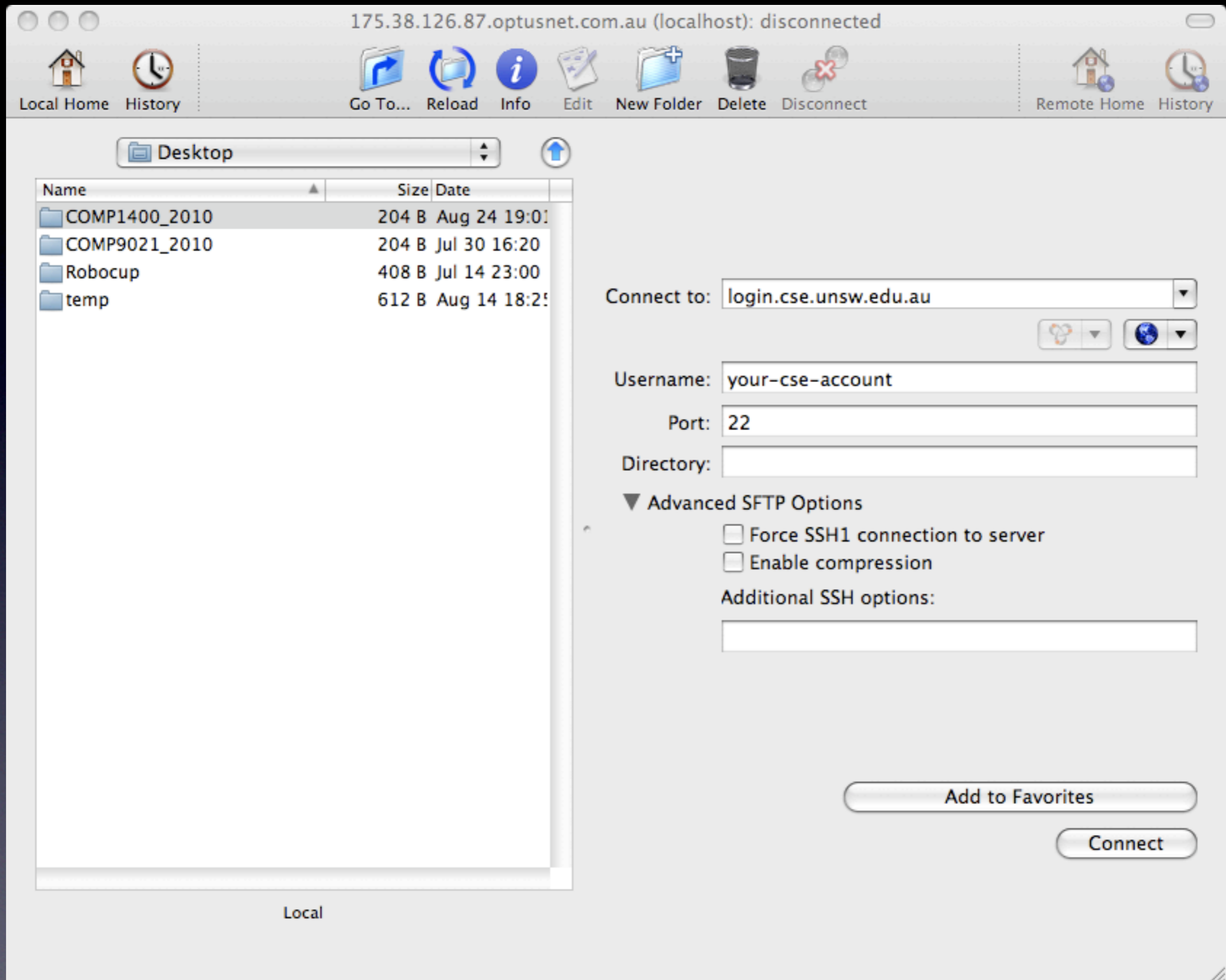
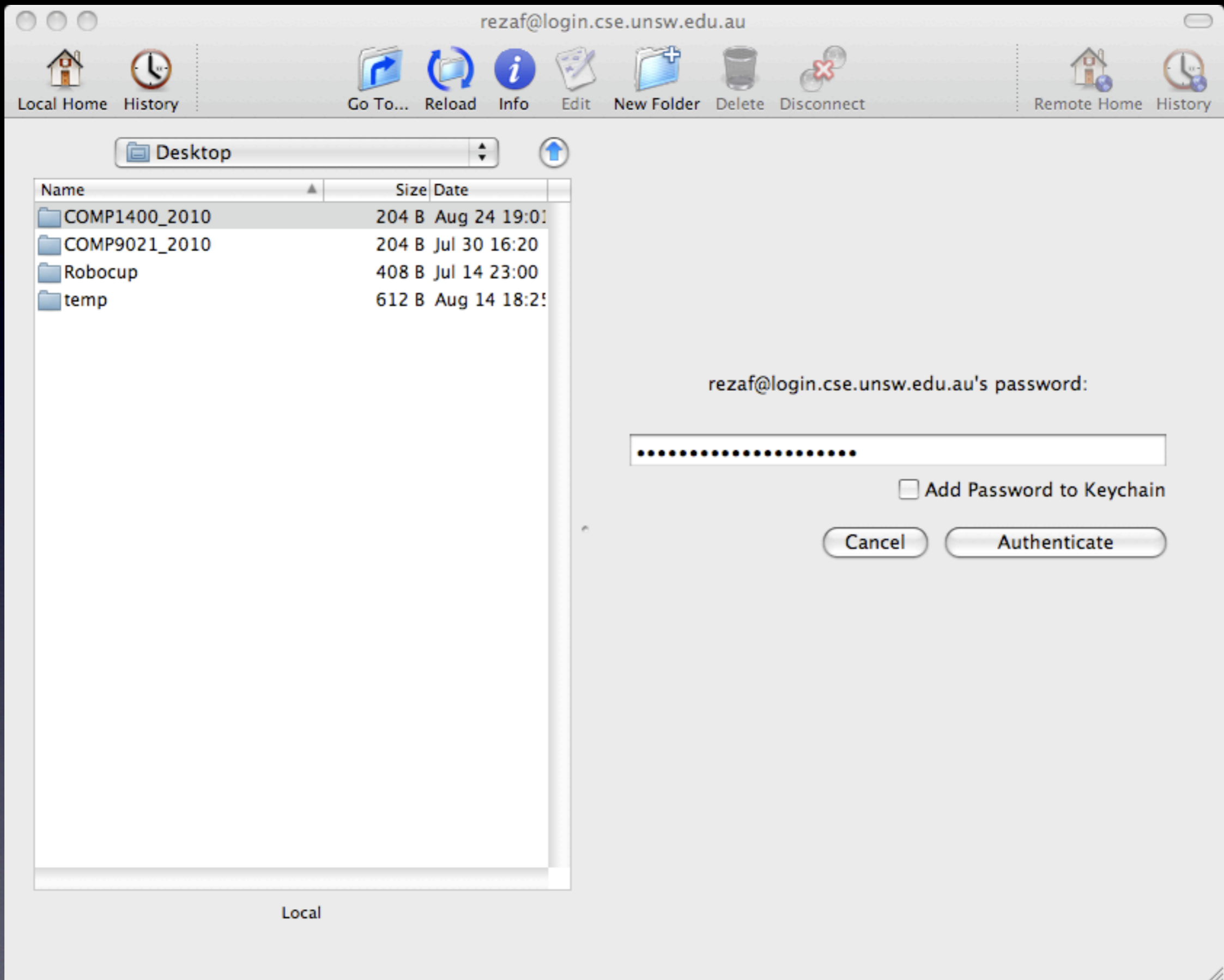


COMPI 400

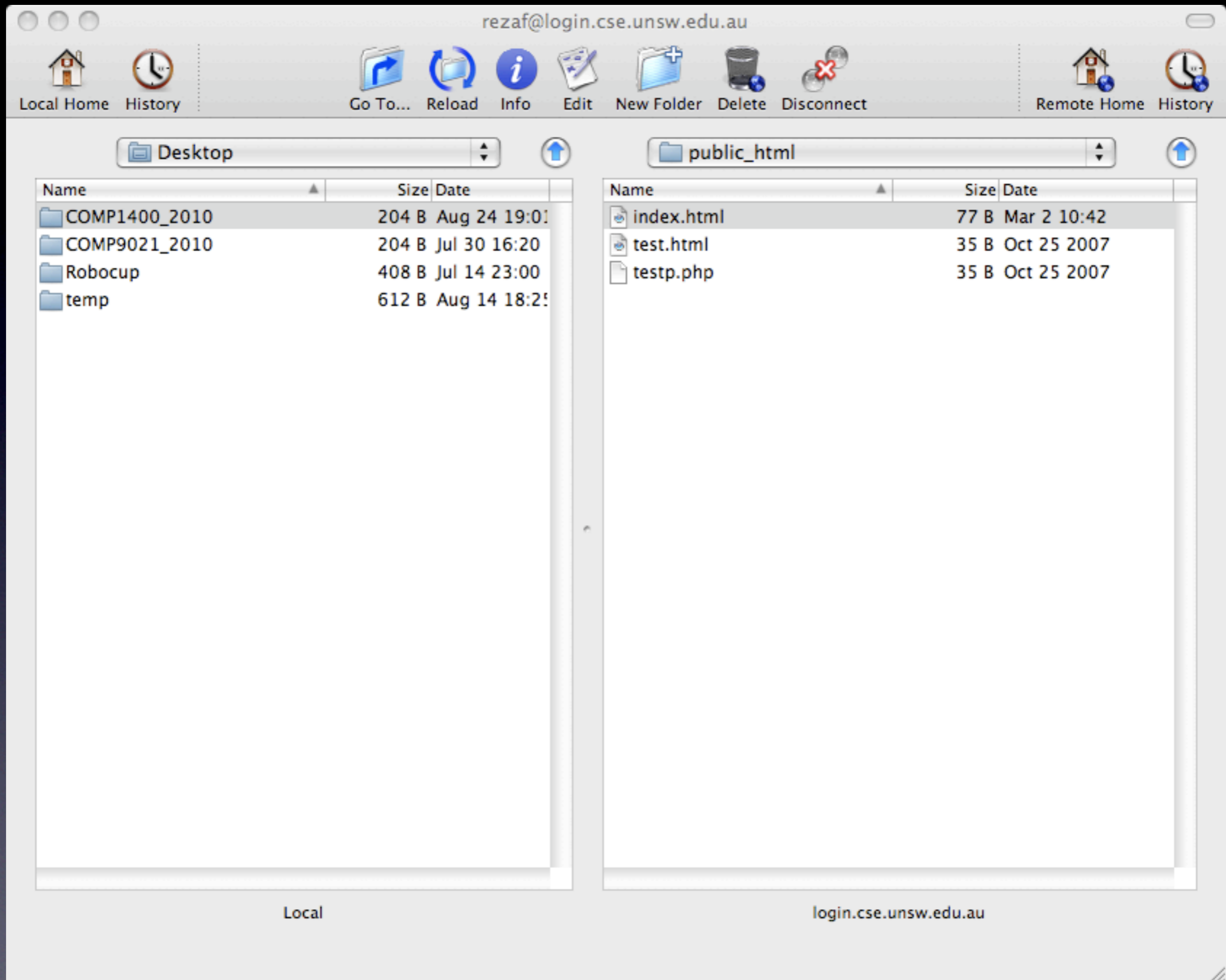
Using Fugu to upload your assignment to
your cse folder



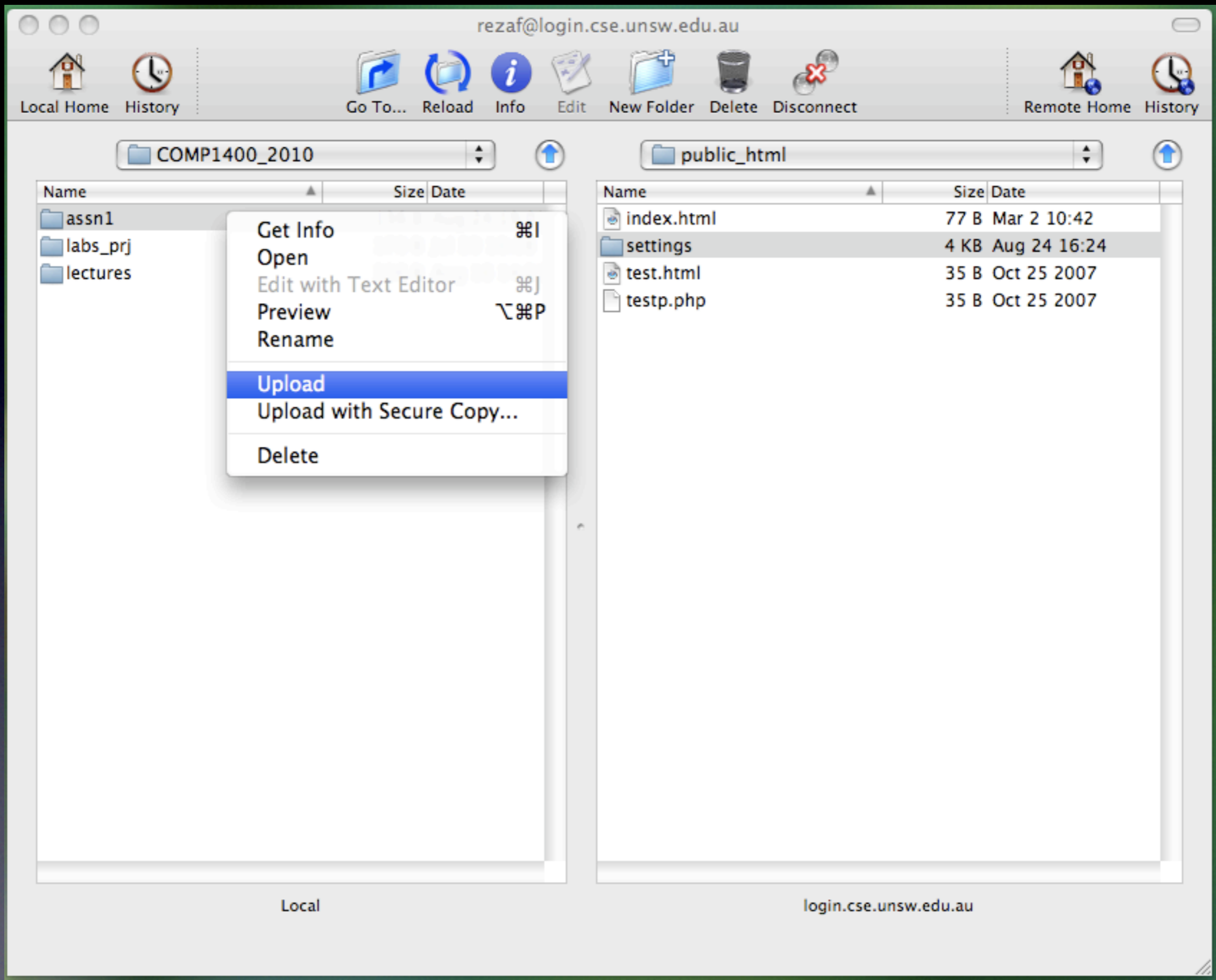
Run Fugu and enter Host info (login.cse.unsw.edu.au, port: 22)
Use your cse-user name



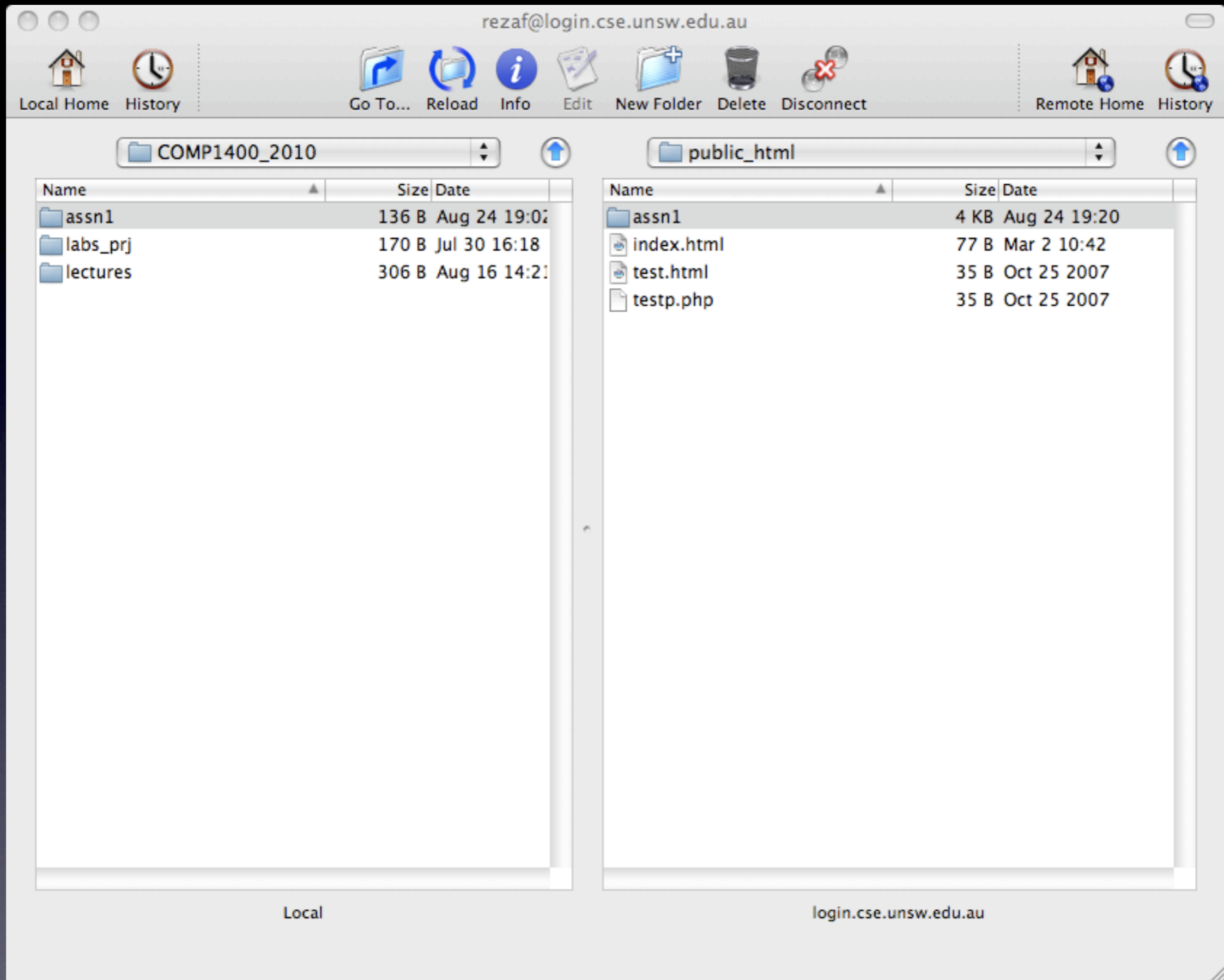
Enter your
password



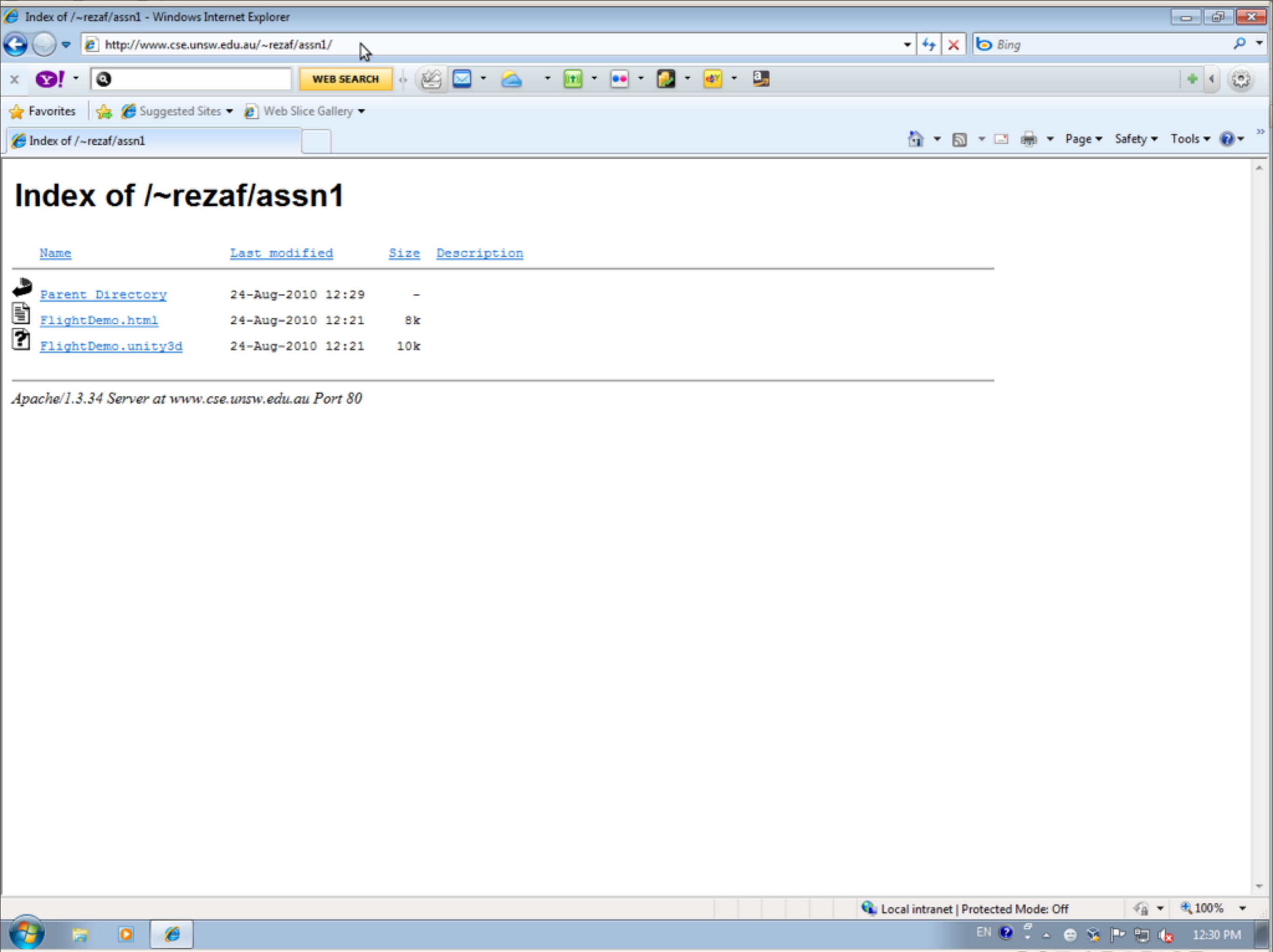
you have access to your local folders in one side
and your home directory (on cse server) on the other side
Go to public_html folder



Go to your local folder which has assignment folder
Make sure the other side is in public_html
Right-click on assignment folder and choose 'Upload'



You should be able to see your assignment folder in the other side
Choose **Disconnect** to Exit



Check if the assignment is accessible
use <http://www.cse.unsw.edu.au/~username/assn1>
and choose the html file