



COMP9242
Advanced Operating Systems
S2/2011 Week 2:
PS to seL4

Copyright Notice

These slides are distributed under the Creative Commons Attribution 3.0 License

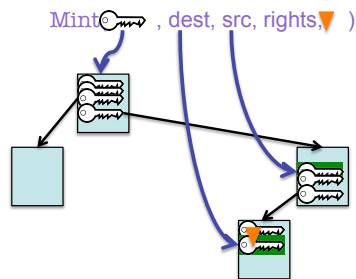
- You are free:
 - to share—to copy, distribute and transmit the work
 - to remix—to adapt the work
- under the following conditions:
 - Attribution:** You must attribute the work (but not in any way that suggests that the author endorses you or your use of the work) as follows:
 - “Courtesy of Gernot Heiser, [Institution]”, where [Institution] is one of “UNSW” or “NICTA”

The complete license text can be found at <http://creativecommons.org/licenses/by/3.0/legalcode>



PS to Cap Derivation

- Copy, Mint, Mutate, Revoke are invoked on CNodes

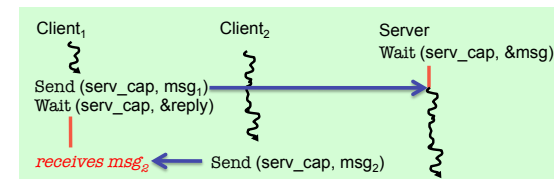


- CNode cap must provide appropriate rights
- Copy takes a cap for destination
 - Allows copying of caps between CSpaces
 - Alternative to granting via IPC



PS to Endpoints

- Synchronous endpoints are synchronisation points
- They provide communication between a sender and a receiver
- BUT** that doesn't mean they have a sender and receiver “side”
- An endpoint is essentially a queue of senders or receivers
 - first invocation of an empty EP queues the caller
 - any further callers of the same kind (sender/receiver) queue behind
 - modulo prio
- Consequence: 2-way communication generally requires two EPs



- Reply caps automatically provide the second endpoint!

