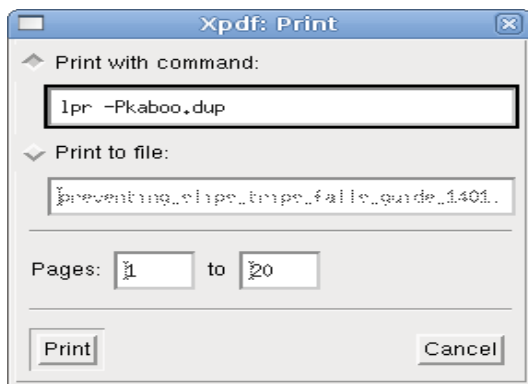


How to print from CSE labs

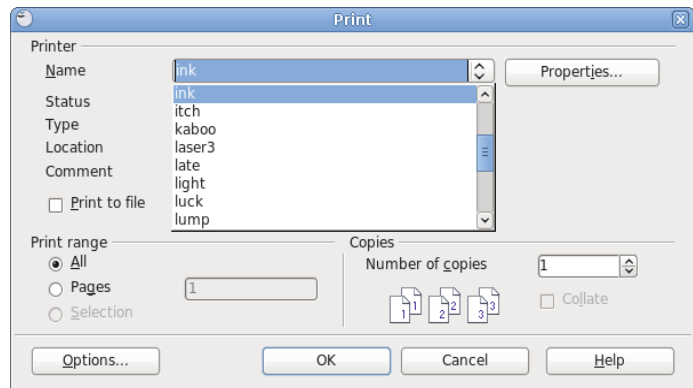
CSE lab printers default configuration prints *double-sided with watermark*. These printers are kaboo, lump, shooter, itch, ouch, light, luck, ants, rude, roof and chiller.

From Linux/Unix

- Print from xterm: issue the command **lpr -P<printerName> <filename.txt/pdf/ps>**
eg: **lpr -Plump myProject.pdf**
(Using the command line, the file must be a **text** or **pdf** or **postscript** document)
- Print from an application (eg: xpdf, openoffice): issue the command **lpr -P<printerName>** in the print-dialog or select appropriate printer, eg:



print-dialog from xpdf application



select-appropriate-printer

NOTE: Your document may not be readable or even not printed if you print directly from the command line from the xterm. So please ensure that you open and print the files using the appropriate application, for example open a .pdf file with **xpdf filename.pdf** then issue a print command in the print-dialog as shown above: **lpr -P<printerName>**

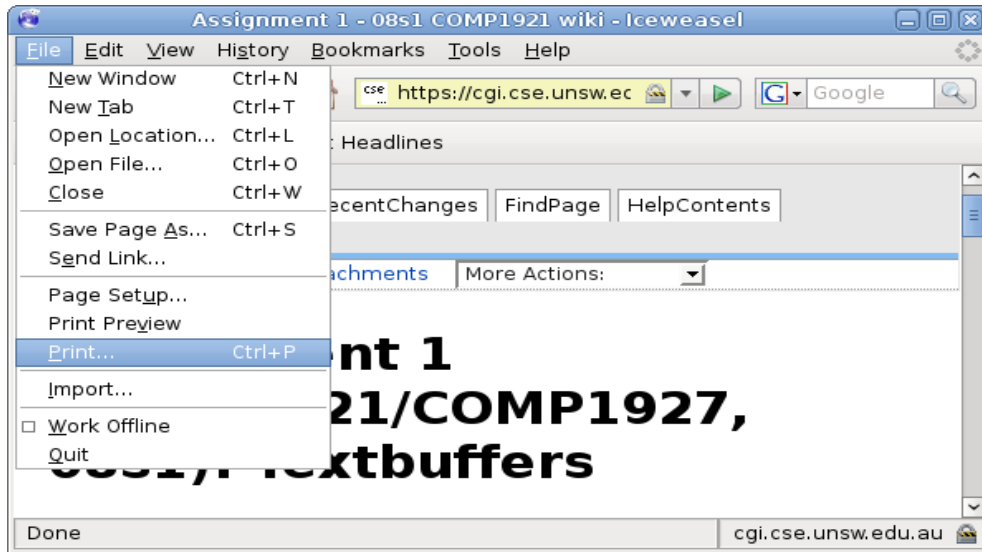
- Print a job *without* the login (watermark):
 - double-sided: **lpr -P<printerName>.dup <filename>**
 - single-sided: **lpr -P<printerName>.sgl <filename>**eg: **lpr -Pitch.sgl assignment1.c**
this will print my (text) assignment1.c singled-sided without the watermark, to itch printer.
- Check a queue job number: **lpq -P<printerName>**
- Remove a print job: **lprm -P<printerName> <job no.>**
- Remove job once it has started printing (also remove all your jobs): **lprm -P<printerName> -a**
- Place multiple pages onto a single physical page:
mlpr -<no. logical pages> -P<printerName><filename>
eg: **mlpr -4 -Pouch lectureNote1.pdf**
this will print four-pages into one physical page to ouch printer

NOTES:

1. If no appropriate printer listed, you may like to select the *Print to file* option. The output file will be in ps format (by default) then issue the print command as shown above.
2. Files in **.ps** or **.pdf** can be viewed by **gv** or **acroread (or xpdf)** respectively.
3. If printing double-sided, two pages are deducted from your print quota.

From VMware Windows:

- In general, select *Print* function from *File* drop-down-menu and select the appropriate printer.

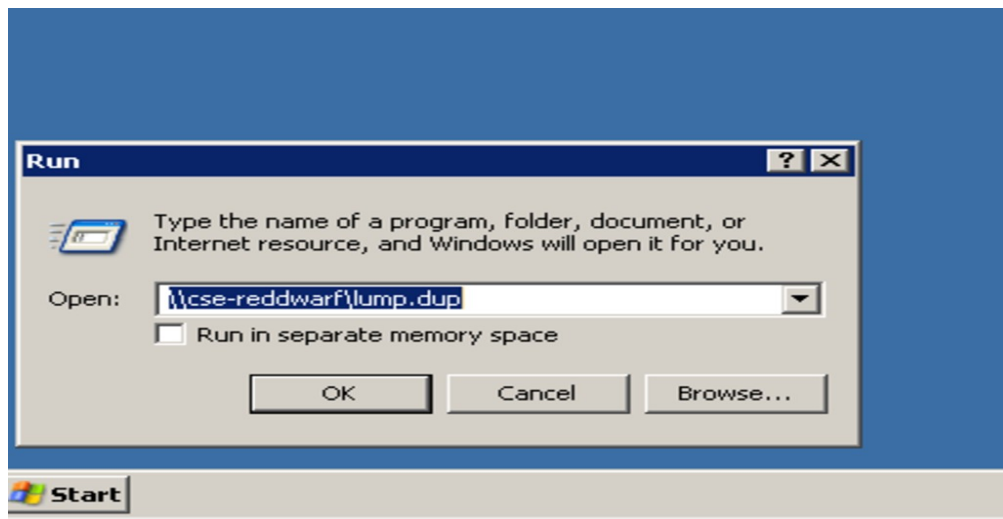


Select print function from File drop-down-menu

If no appropriate printer listed in the print dialog then you should install for yourself by clicking the *Start* button at the bottom left corner:

Start --> Run --> `\\cse-reddwarf\<printerName>.<dup/sgl>` then click OK.

Eg: **Start --> Run --> `\\cse-reddwarf\ants.dup`** This will install the printer "ants.dup" onto your print-dialog.



Install cse printer from VMware Windows.

- Please refer to Linux/Unix section above for printing *without* login (watermark). Basically the `<printerName>.dup` and `<printerName>.sgl` will print double-sided and single-sided respectively without watermark.

For more details please visit: <http://taggi.cse.unsw.edu.au> then search for **printing**